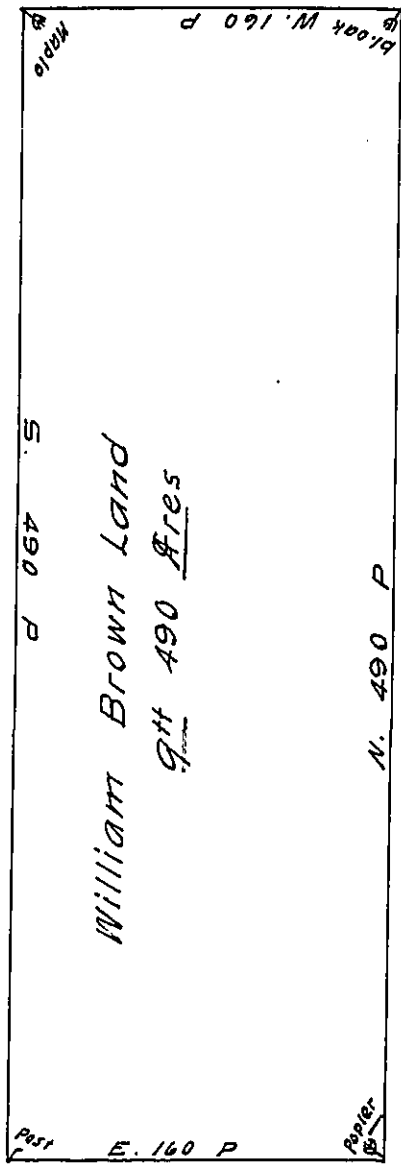


Andrew Job land



Randl Janny land

By virtue of a warrant to me directed dated ye 7th 1-m. 1701
 I have surv^d for William Brown a tract of land in Nottingham be-
 gining at a corner poplar being a corner of Randel Janny's land
 then by his line North 490 pch to a corner black oak then West 160
pch to corne- Maple being a corner of Andrew Jobs
 land thence by his line 490 pch to a corner post then Est 160
pch to the place of begining containing 490 acres of land ye
 13-3-m. 1701

H Henry Hollingsworth

IN TESTIMONY that the above is a copy of the original remaining on file in
 the Department of Internal Affairs of Pennsylvania, made
 conformably to an Act of Assembly approved the 16th day of
 February, 1833, I have hereunto set my Hand and caused
 the Seal of said Department to be affixed at Harrisburg,
 this twenty second day of April 1910

Henry Houch
 Secretary of Internal Affairs.